

Houle, Brian (Crofton)

From: Houle, Brian (Crofton)
Sent: Tuesday, May 23, 2023 3:23 PM
To: Houle, Brian (Crofton)
Subject: Watershed update: May 23

Good day,

The warm dry weather continues and lake level is dropping fast.

The lake is now at 82% full and flow was settled in on the seasonal 15 cms since later on Saturday May 20.

About 2/3rds of the snow pack remains to melt which will help slow down the decline in lake level if rainfall does not return to the area.

The flow guide chart now guides a reduced flow of 12 cms given current lower lake level and below avg snow pack condition.

From earlier discussions, fish stewards have placed higher value on sustaining 15 cms through to June 15th and lesser value for the April flow of 25 cms and the summer flow of 7 cms.

The higher value for 15 cms relates to the presence of the newly formed small salmon and with 15 cms, these small fish are more likely to successfully navigate to the ocean.

The river is now at 15 cms flow and lake level is dropping slowly with flow guide chart now indicating a flow of 12 cms is appropriate.

A meeting of fish regulators/Cowichan Tribes/Cowichan Watershed Board will be coordinated to discuss the river flow reduction guided by the flow guide chart .

It is important that the flow guide chart reflect the true values of fish and fish habitat and that the guidance it provides is followed.

The flow chart is not yet adopted as standard practice and at this time prompts discussion only.

A river flow of less than 15 cms is controlled by Department of Fisheries and Oceans Canada and their approval must be obtained before flow is reduced.

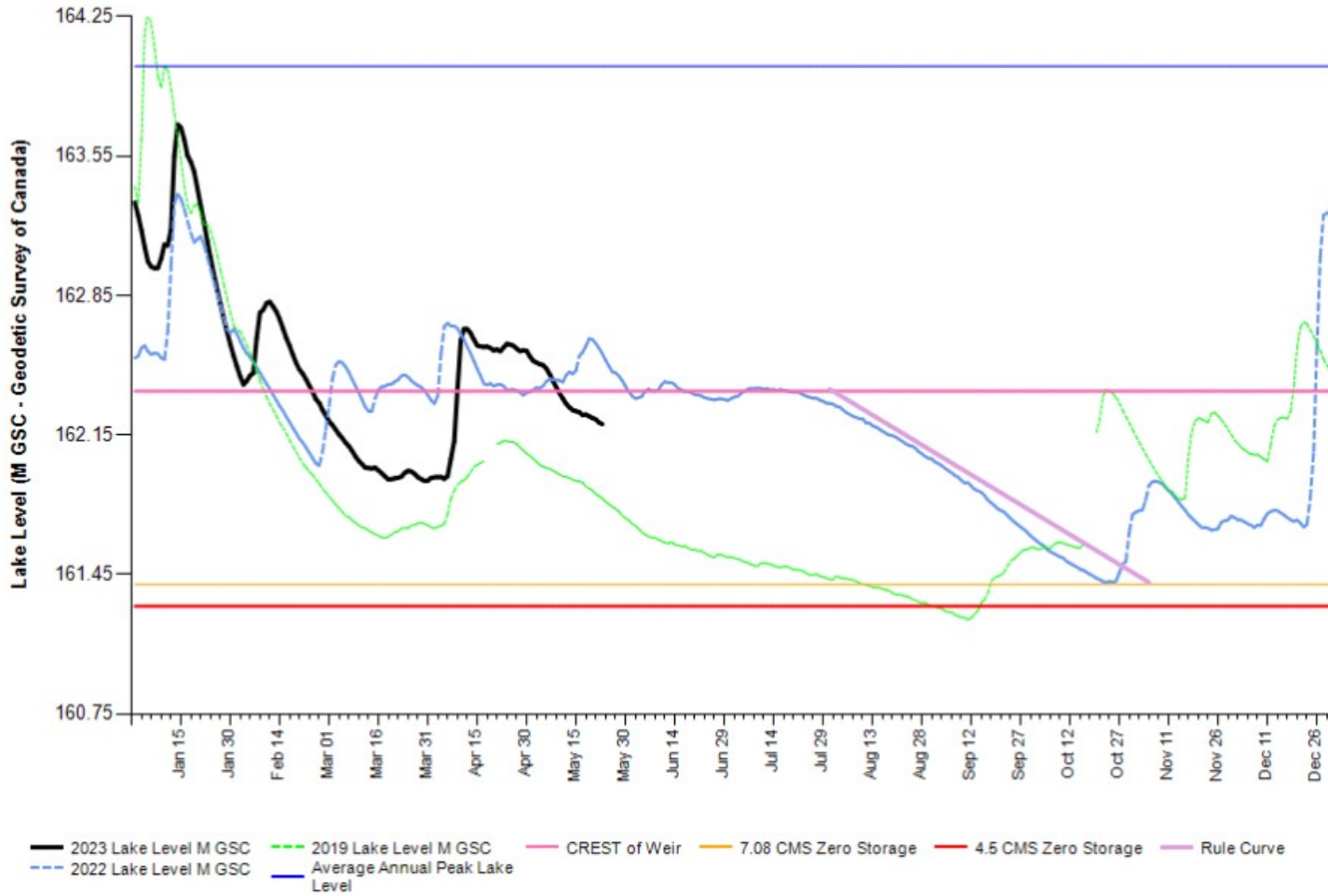
As heads up, given the high value placed on sustaining 15 cms until June 15th, flow will be held at 15 cms until approval is in hand, authorizing the guided flow of 12 cms.

If flow from lake is sustained at 15 cms and rainfall does not return in coming months, it is then more likely that the flow guide chart will indicate a flow less than 7 cms for this summer.

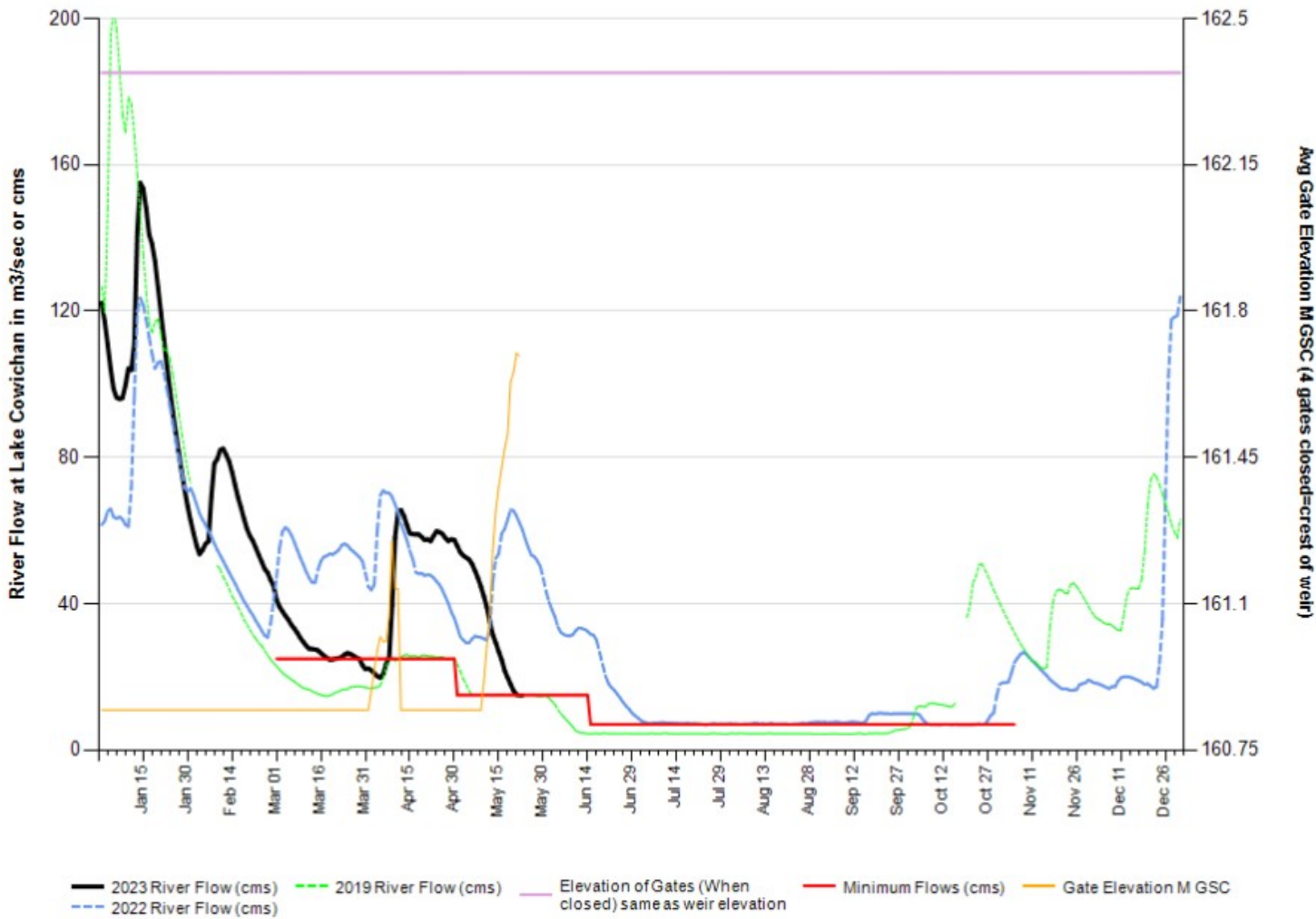
If flow from the lake will change before June 15th, either the regular weekly email will indicate it or a special extra bulletin will be issued to inform every one of the change in river flow plans.

Regards,
Brian Houle
Manager, Environment
Catalyst Crofton

2023 Cowichan Lake Level - 2023 (Black) & 2022 (Blue) & 2019 (Green)



2023 Cowichan River Flow - 2023 (Black) & 2022 (Blue) & 2019 (Green)



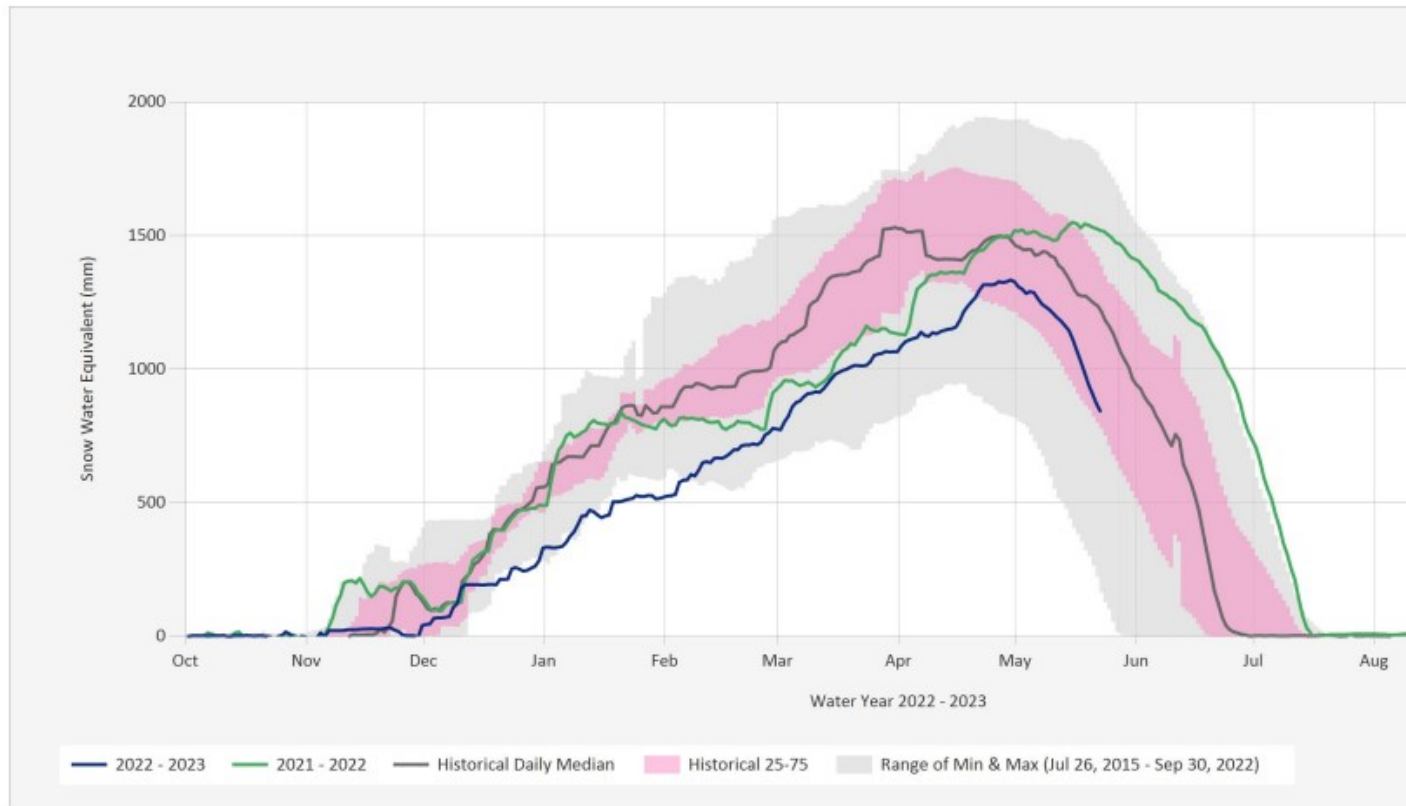
Next 7 Days



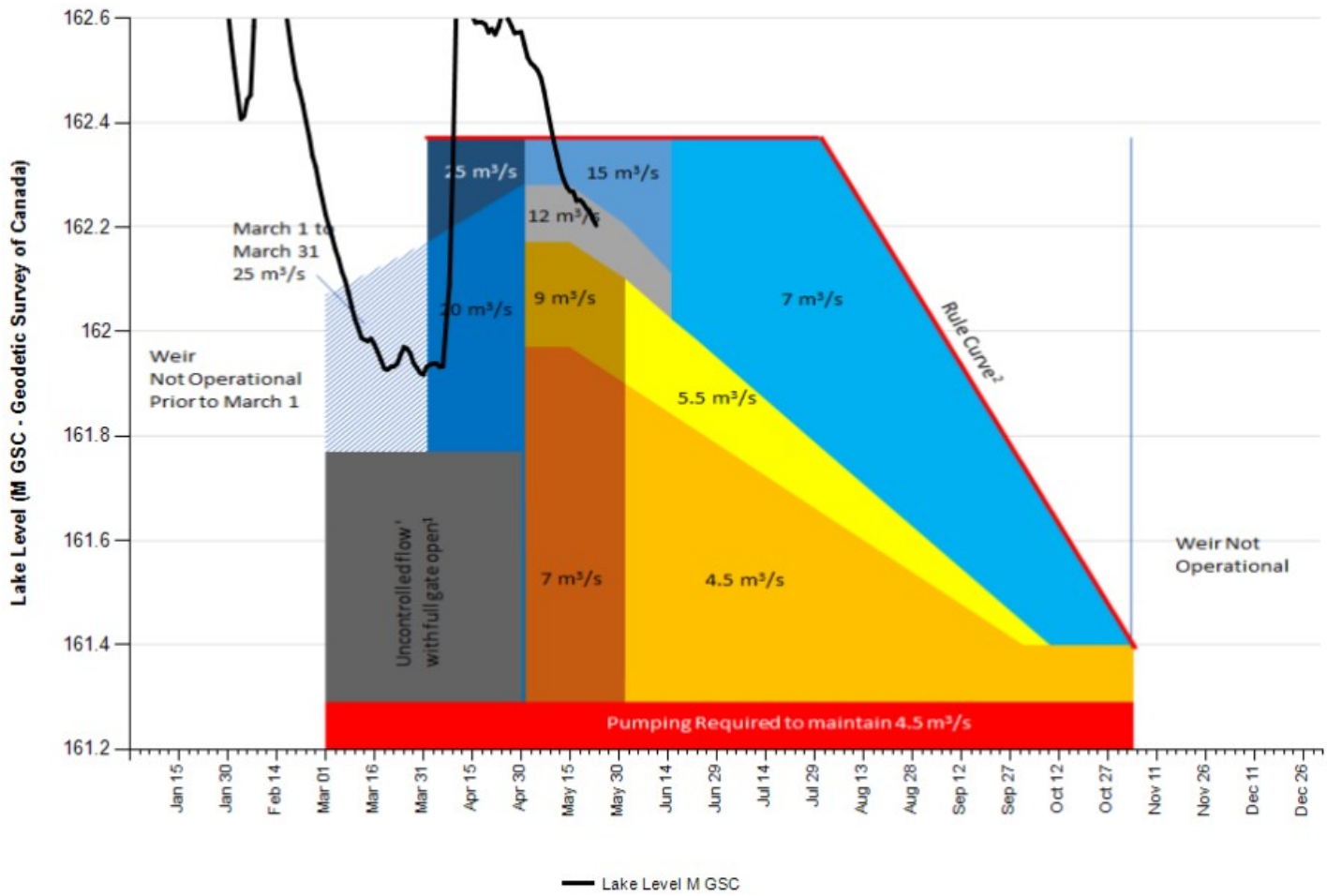
	Wed 05/24 Mainly sunny	Thu 05/25 Sunny	Fri 05/26 A mix of sun and clouds	Sat 05/27 A mix of sun and clouds	Sun 05/28 A mix of sun and clouds	Mon 05/29 A mix of sun and clouds	Tue 05/30 Mainly sunny
	20°	25°	25°	21°	19°	18°	18°
Feels like	21	27	29	22	19	18	18
Night	10°	12°	14°	10°	6°	7°	8°
POP	20 %	0 %	30 %	30 %	30 %	30 %	20 %
Wind (km/h)	3 w	5 NE	5 N	9 w	7 w	5 s	6 s
Wind gust (km/h)	5	8	8	14	11	8	9
Hrs Of Sun	10 h	15 h	11 h	8 h	5 h	8 h	11 h

Source Data: SW.Daily@3B24P

Location: Heather Mountain Upper, Latitude: 48.943875, Longitude: -124.452113, Elevation: : 1190 m



2023 Cowichan Lake Level and River Flow Guidance Chart - Below Average snow pack



Brian Houle – Catalyst Crofton
 A Paper Excellence Company
 Manager, Environment
 Cell: 250-715-8718
www.paperexcellence.com

