

Houle, Brian (Crofton)

From: Houle, Brian (Crofton)
Sent: Wednesday, April 10, 2024 9:40 AM
To: Houle, Brian (Crofton)
Subject: Watershed Update: April 10, 2024

Good day,

Conditions are stable in the watershed with flow currently controlled at 25 cms, the ideal flow for April.

With the alarming conditions in watershed, low snow pack specifically, authorization is now in hand, allowing a lower flow in April.

Beginning today, flow from lake will be ramped down by 2 cms/day, and will continue to ramp down until lake is back at 100% full.

The lake has risen naturally over previous few days, from 85% up to 92% full while the snow pillows have not yet begun to reduce.

Some rain in forecast but not much.

I have included the "Flow guide chart" but please understand we are not following that program, as that program guides flows <7 cms in July and August, and 2024 will not be operated in that way.

The colder weather recently is helpful as we need the snow pack to remain snow for as long as possible this spring.

The presence of warmer weather in early spring can result in more rapid snow melt, overtopping of the weir, and the loss of that water and then more challenging conditions in July and August.

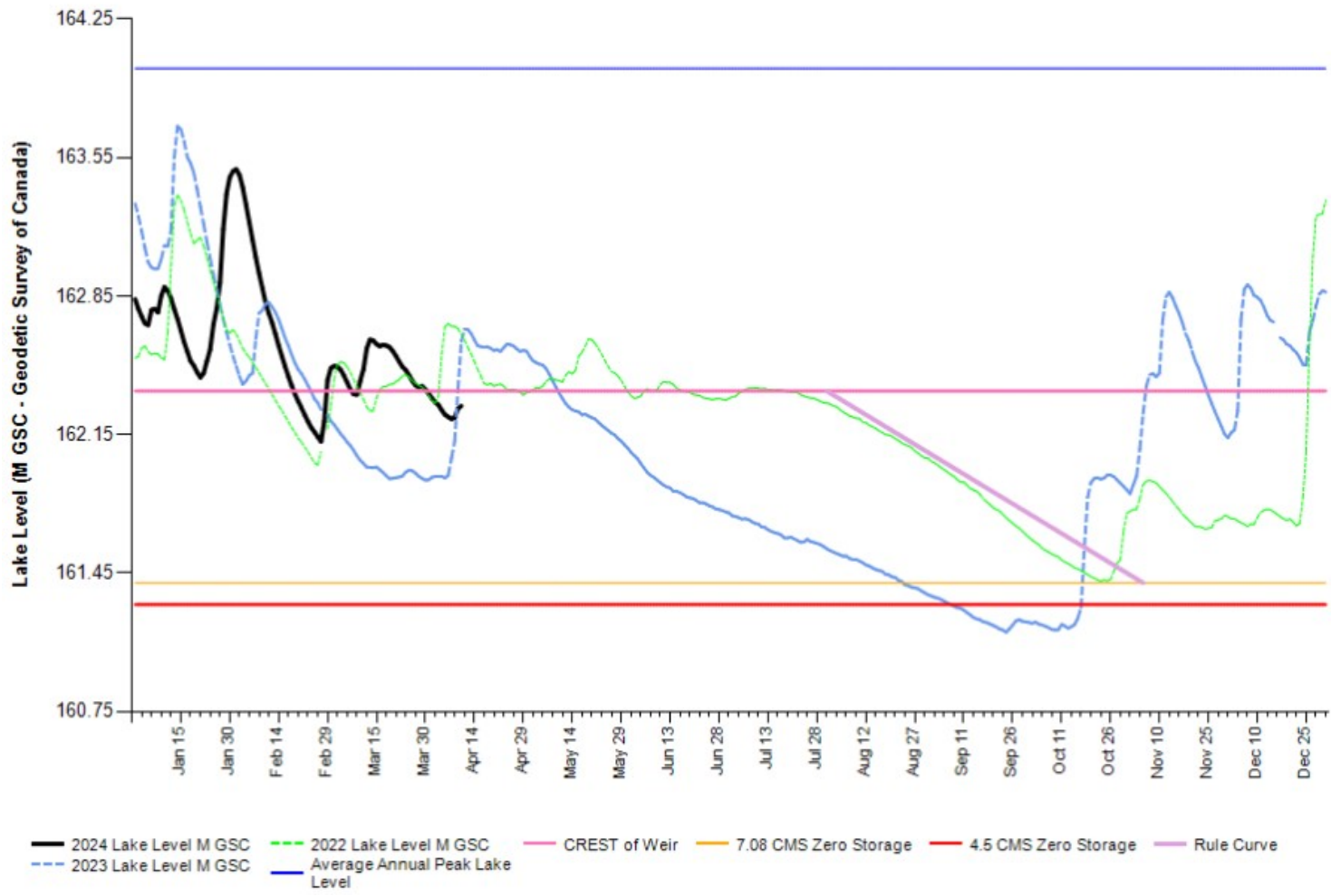
Following from 2023 summer conditions and the fish kill, the need in 2024 will be to now also gain authorization for less than ideal flows in May and June, when ideally we would release 15 cms.

In 2024 there will not be enough water in the lake to support 15 cms in May and June, and then also support 7 cms for remainder of June, July and August.

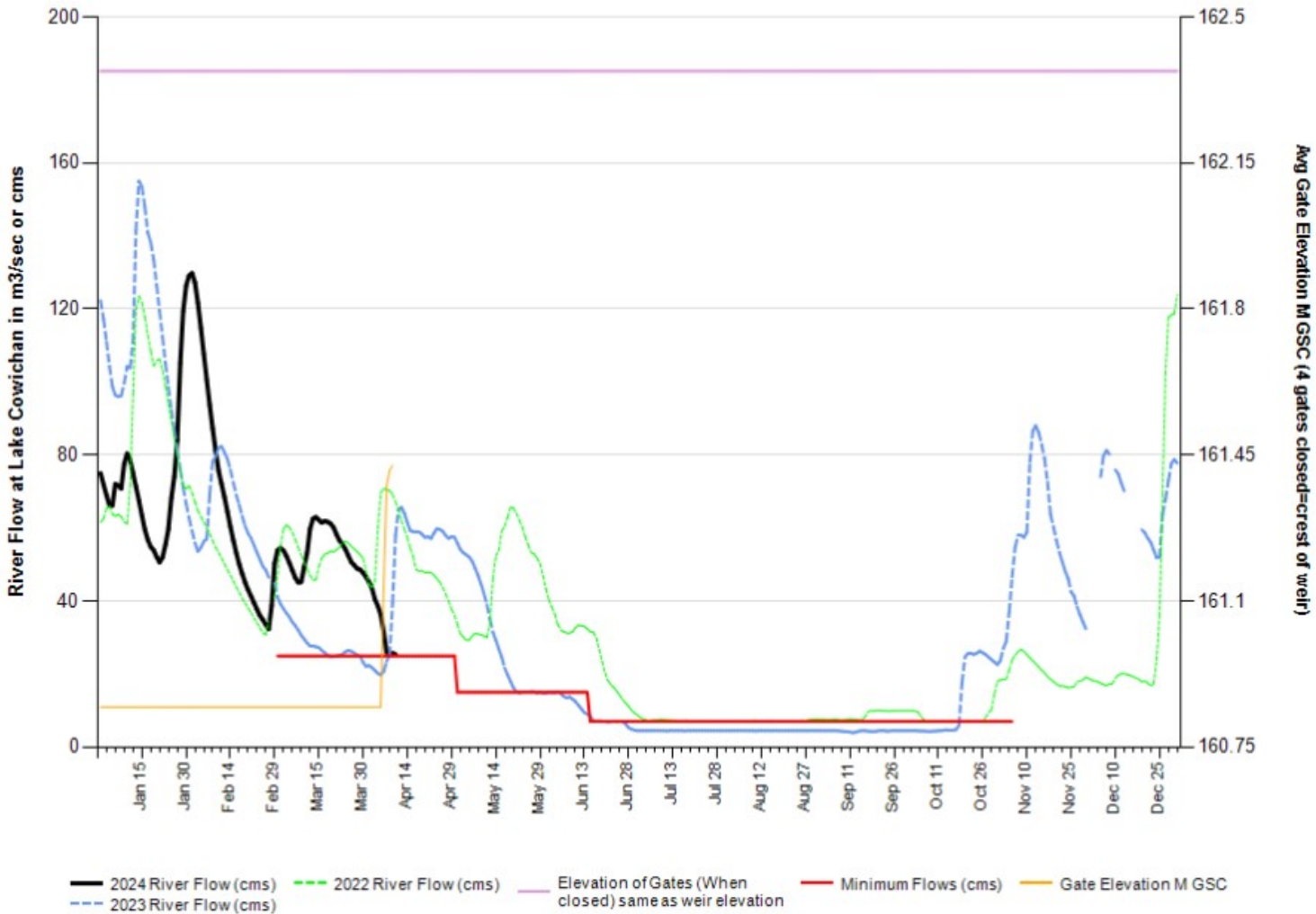
In order to have enough water in lake to support 7 cms out to September and beyond the peak summer heat of July and August, authorization for flows down to as low as 7 cms in May-June is needed.

Regards,
Brian Houle

2024 Cowichan Lake Level - 2024 (Black) & 2023 (Blue) & 2022 (Green)




2024 Cowichan River Flow - 2024 (Black) & 2023 (Blue) & 2022 (Green)

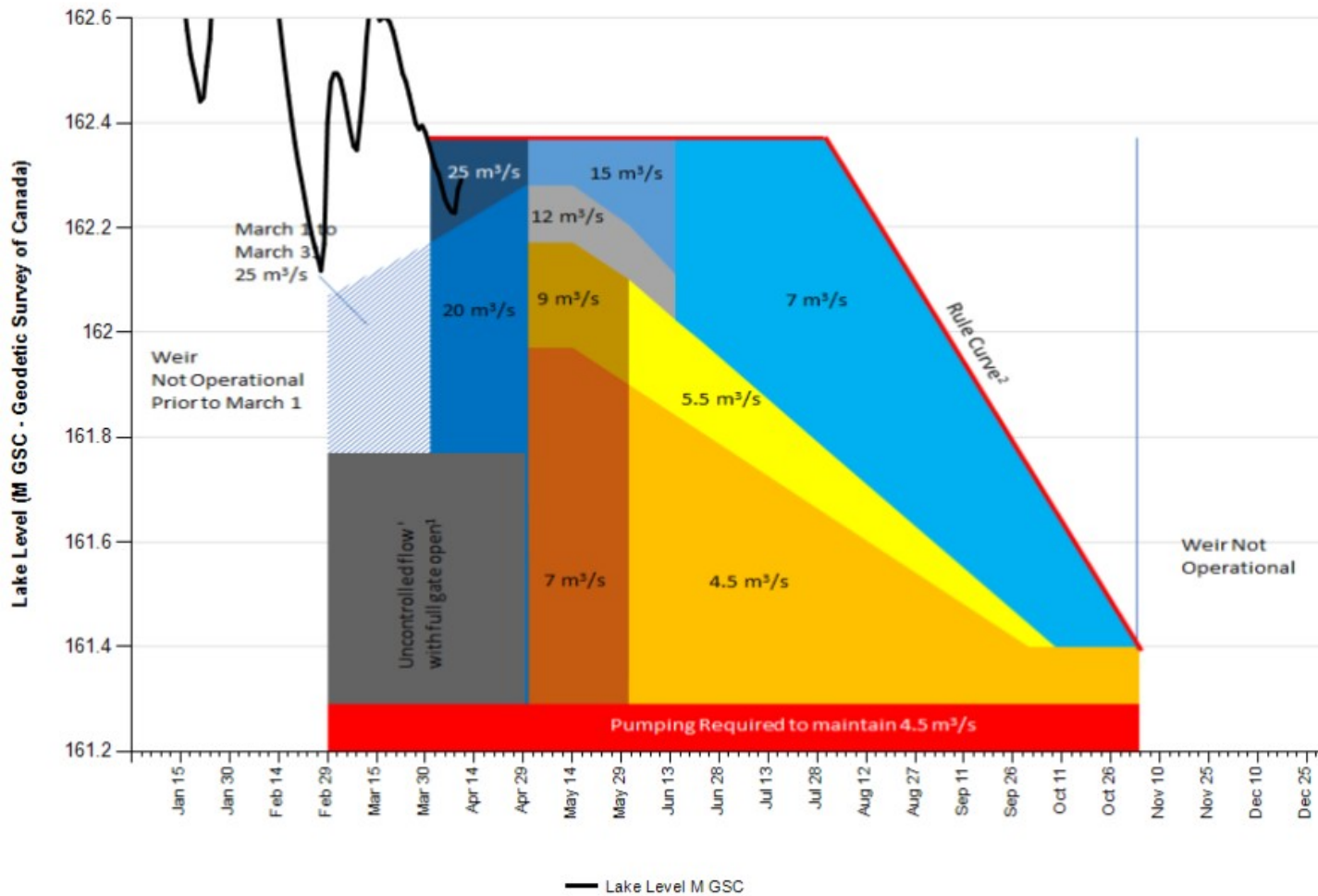


Next 7 Days



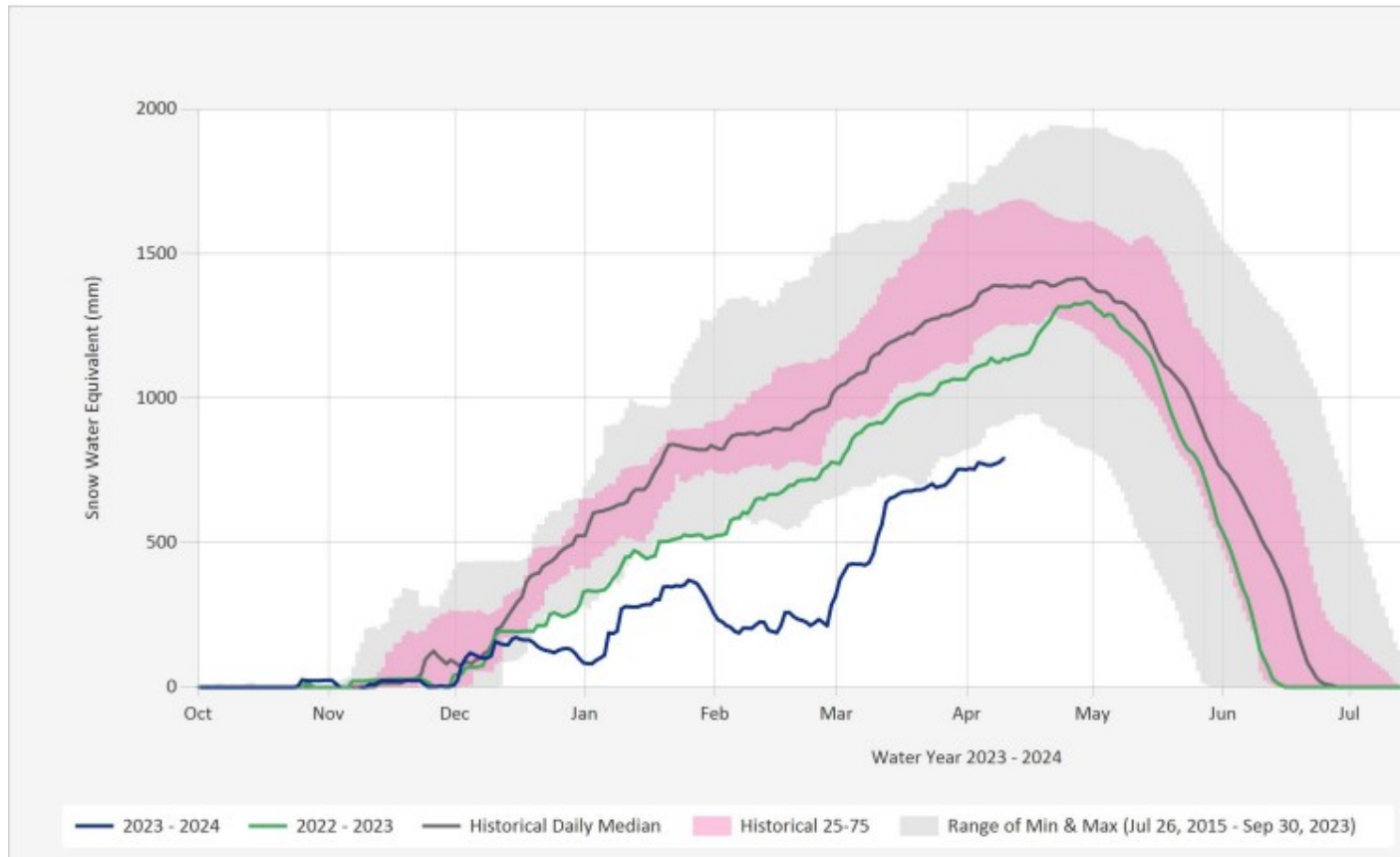
	Thu 04/11 Rain	Fri 04/12 A mix of sun and clouds	Sat 04/13 Mainly sunny	Sun 04/14 A mix of sun and clouds	Mon 04/15 A Few showers	Tue 04/16 Mainly sunny	Wed 04/17 Chance of a shower
							
	7°	11°	15°	13°	8°	11°	13°
Feels like	5	11	15	12	7	10	13
Night	3°	2°	3°	2°	0°	1°	2°
POP	90 %	30 %	20 %	20 %	70 %	20 %	30 %
Wind (km/h)	13 s	6 N	4 N	13 sw	9 w	9 N	5 E
Wind gust (km/h)	20	9	6	20	14	14	8
Hrs Of Sun	1 h	5 h	10 h	6 h	5 h	10 h	9 h
24 Hr Rain	~10 mm	-	-	-	1-3 mm	-	<1 mm

2024 Cowichan Lake Level and River Flow Guidance Chart - Below Average snow pack



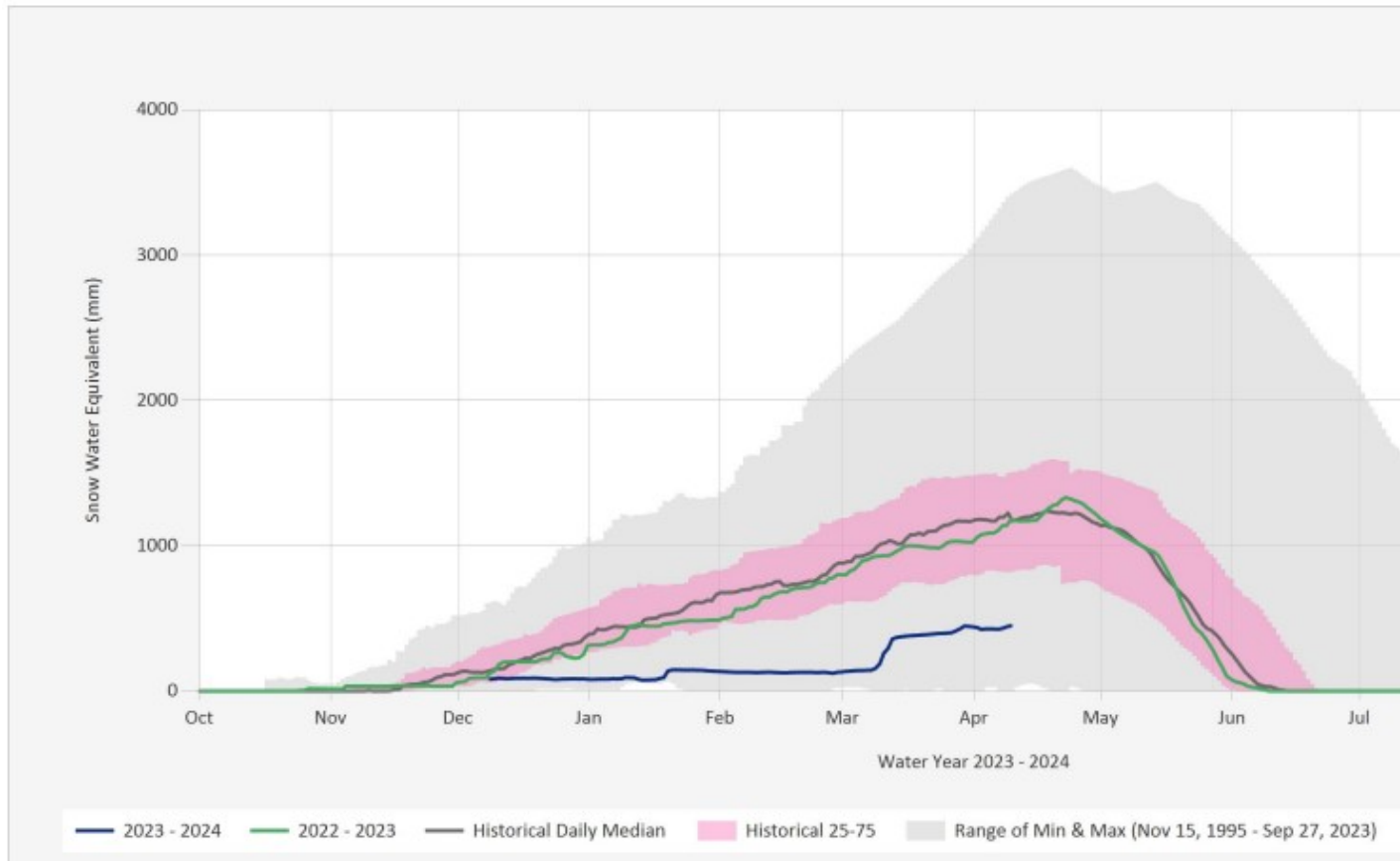
Source Data: SW.Daily@3B24P

Location: Heather Mountain Upper, Latitude: 48.943875, Longitude: -124.452113, Elevation: : 1190 m



Source Data: SW.Daily@3B23P

Location: Jump Creek, Latitude: 48.969505, Longitude: -124.276182, Elevation: : 1160 m



Brian Houle – Catalyst Crofton

A Paper Excellence Company

Manager, Environment

Cell: 250-715-8718

www.paperexcellence.com

This email and its contents are for the exclusive benefit of Paper Excellence Canada Holdings.

Legal Disclaimer: This e-mail and any attachment(s) are confidential. If you are not the intended recipient, please notify the sender immediately by return e-mail, delete this e-mail and do not copy, use or disclose it to any other person.