

## Houle, Brian (Crofton)

---

**From:** Houle, Brian (Crofton)  
**Sent:** Monday, April 29, 2024 12:09 PM  
**To:** Houle, Brian (Crofton)  
**Subject:** Watershed Update: April 29, 2024

Good morning.

The wet weather from last week has had an impact.

With lake already at full level, the impact of rainfall was to raise lake level even higher and in response, control gates were opened to increase river flow.

The river flow was being controlled at 15 cms and very quickly the flow was elevated to 33 cms and lake has stopped rising but is still on control.

With some wet weather predicted this week (but not much), the lake level is expected to again begin to drop in coming few days.

As the lake level drops, flow in the river will again be reduced by 2 cms each day, down to a minimum flow of 15 cms again, with objective to hold lake at 100% full out to June 25.

Next Tuesday, review of lake and river with regulators will set up guidance for May-June and also on Tuesday, the first weekly teleconference to discuss conditions in watershed with those interested.

It is important to ensure awareness of the people engaged in the Cowichan Watershed given so many people are engaged and helping to support the care of the fish and the fish habitat.

With flow rising from 15 cms to 33 cms, many isolated side channels and pools are again connected to the main stem, but in coming weeks, flow reductions will repeat and the process of isolation of pools and side channels will also repeat.

Our surge in river flow and higher lake levels appears to relate more to the rainfall and less to melting snow pack, but there is some snow melt also helping to raise lake level.

Snow pack is on decline in the Nanaimo watershed and related to fact that the snow pillow in that watershed is at lower (warmer) elevation.

The Cowichan snow pillow at Heather Mountain has stopped rising but is not yet showing melting is taking place at that elevation and that is helpful, keep the water as snow as long as possible.

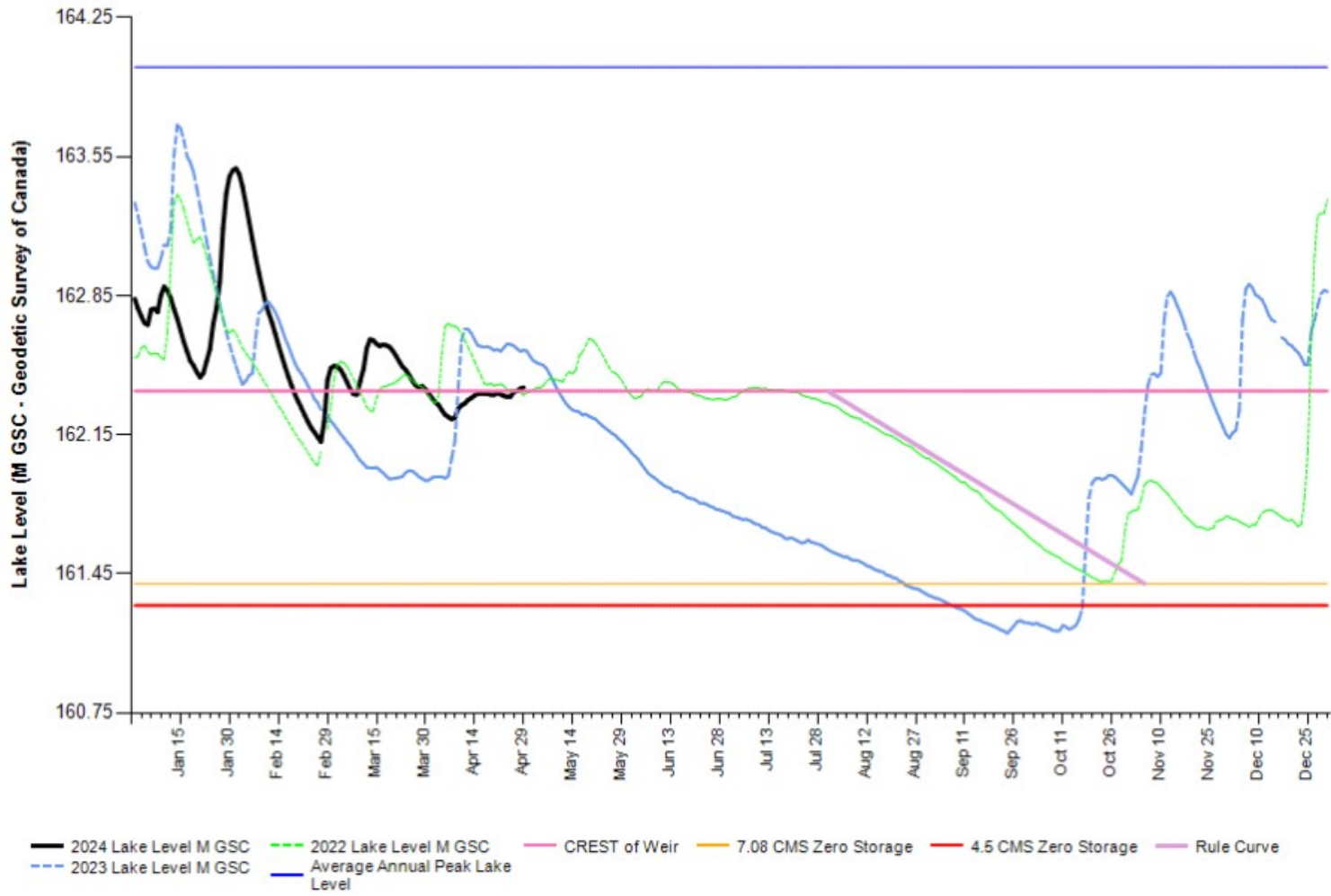
A cold spring will help delay snow melt and if delayed long enough, it is possible to save that water in the lake.

The current spilling of 33 cms of water, vs the needed 15 cms, equates to less water in lake for release later in dry season, and also supports that a new higher dam could be saving a lot of water right now if it was in place.

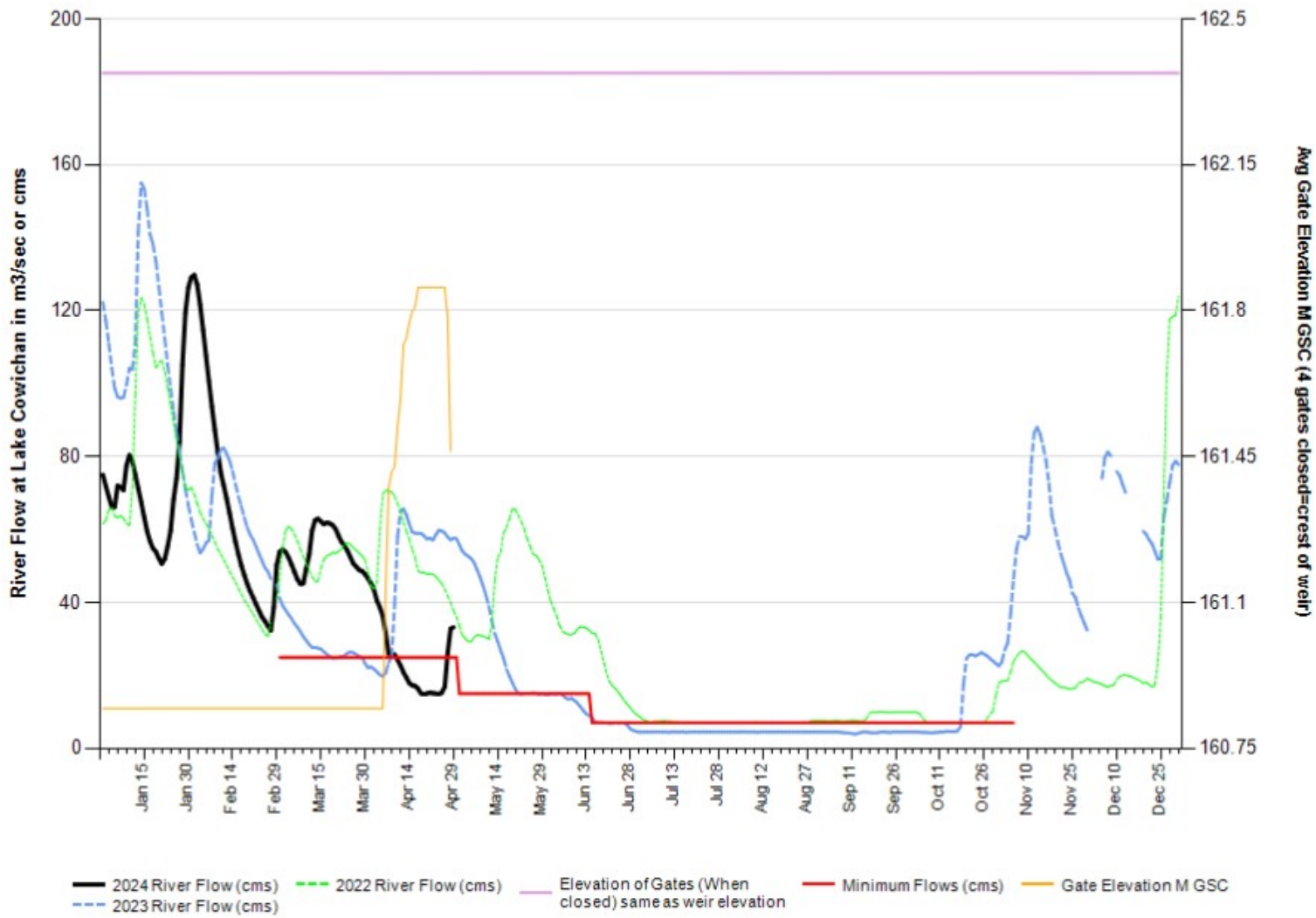
A new dam will be very helpful for this watershed and very encouraged to see most of the funding is in place for the new dam.

Brian

2024 Cowichan Lake Level - 2024 (Black) & 2023 (Blue) & 2022 (Green)



2024 Cowichan River Flow - 2024 (Black) & 2023 (Blue) & 2022 (Green)



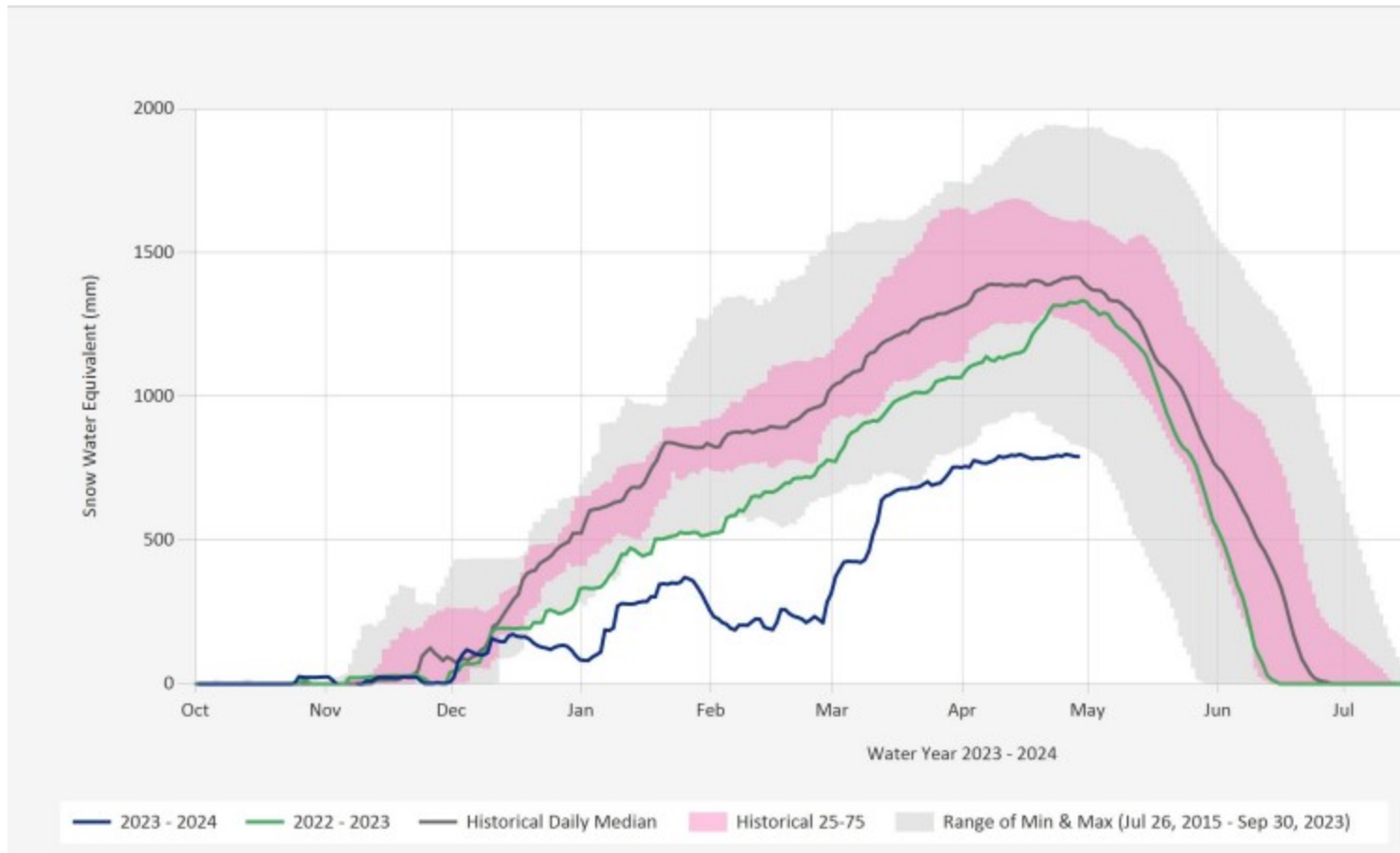
# Next 7 Days



	<b>Tue</b> 04/30	<b>Wed</b> 05/01	<b>Thu</b> 05/02	<b>Fri</b> 05/03	<b>Sat</b> 05/04	<b>Sun</b> 05/05	<b>Mon</b> 05/06
	Chance of a shower	A mix of sun and clouds	Chance of a shower	A Few showers	Mainly sunny	Cloudy with showers	Cloudy with showers
	11°	11°	13°	12°	11°	11°	10°
Feels like	11	10	13	12	10	11	10
Night	2°	4°	6°	7°	8°	8°	7°
POP	40 %	30 %	40 %	40 %	20 %	40 %	70 %
Wind (km/h)	9 N	13 SW	7 NE	8 E	11 W	7 SW	10 S
Wind gust (km/h)	14	20	11	12	17	11	15
Hrs Of Sun	7 h	4 h	8 h	11 h	9 h	3 h	1 h
24 Hr Rain	<1 mm	2-4 mm	<1 mm	~5 mm	-	1-3 mm	~5 mm

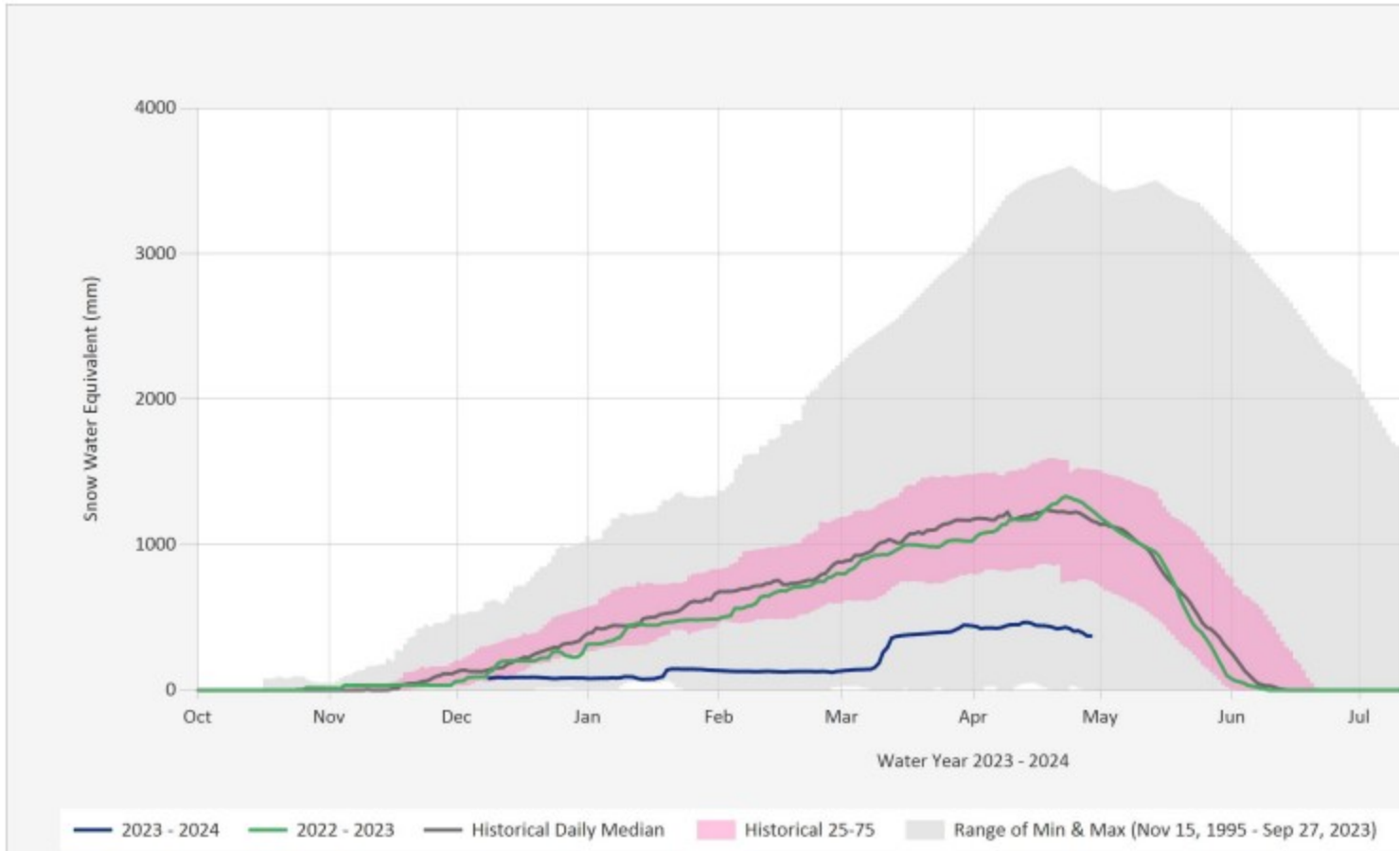
Source Data: SW.Daily@3B24P

Location: Heather Mountain Upper, Latitude: 48.943875, Longitude: -124.452113, Elevation: : 1190 m



Source Data: SW.Daily@3B23P

Location: Jump Creek, Latitude: 48.969505, Longitude: -124.276182, Elevation: : 1160 m



Brian Houle – Catalyst Crofton  
A Paper Excellence Company  
Manager, Environment  
Cell: 250-715-8718  
[www.paperexcellence.com](http://www.paperexcellence.com)

**This email and its contents are for the exclusive benefit of Paper Excellence Canada Holdings.**

**Legal Disclaimer:** This e-mail and any attachment(s) are confidential. If you are not the intended recipient, please notify the sender immediately by return e-mail, delete this e-mail and do not copy, use or disclose it to any other person.