

Houle, Brian (Crofton)

From: Houle, Brian (Crofton)
Sent: Tuesday, July 12, 2022 9:01 AM
To: Houle, Brian (Crofton)
Subject: Watershed Update: July 12, 2022

Good day,

Summer is here, the weather is hot, dry and sunny and lake is still 100% full.

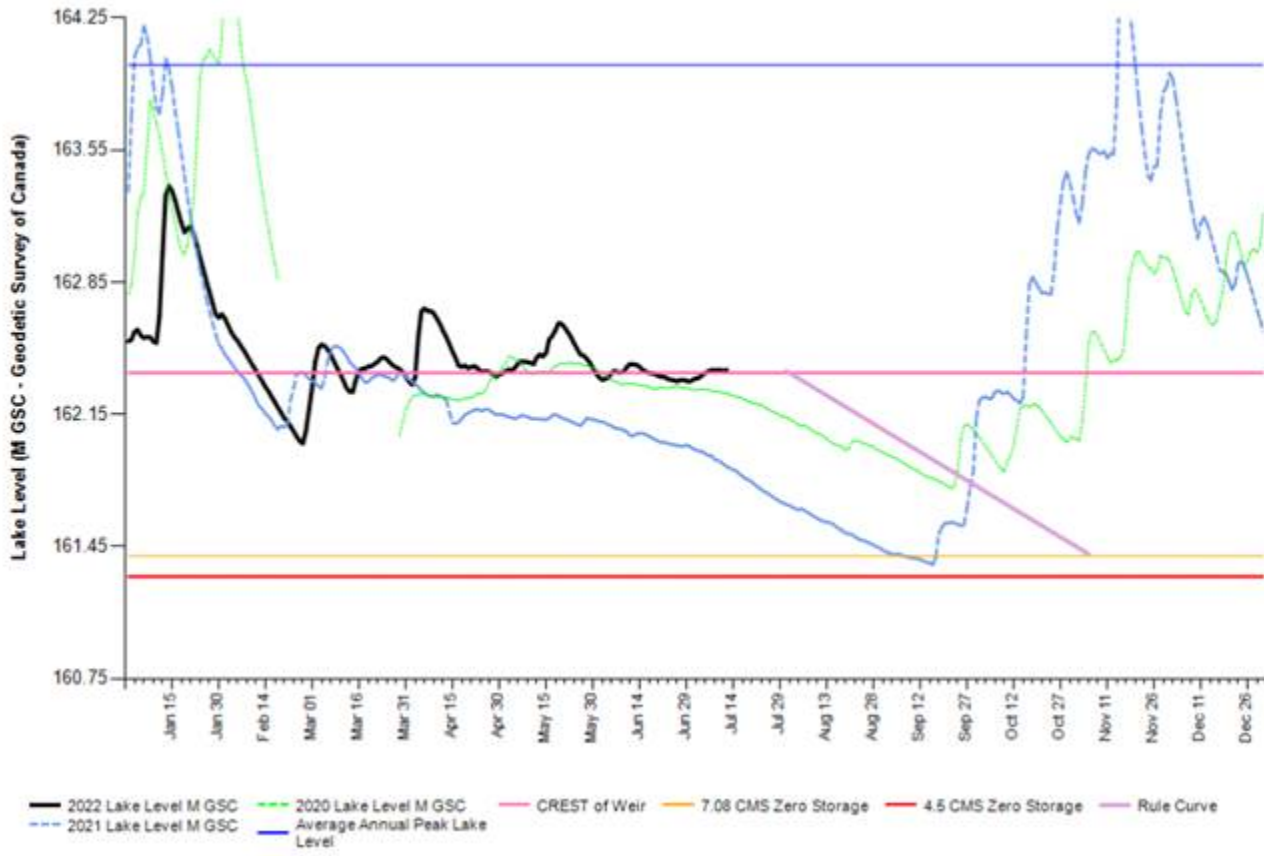
Flow from lake remains elevated at 7.5 cms due to the very high lake level.

With snow pack fully melted in coming days, lake level will begin to decline and flow will settle in on summer base flow.

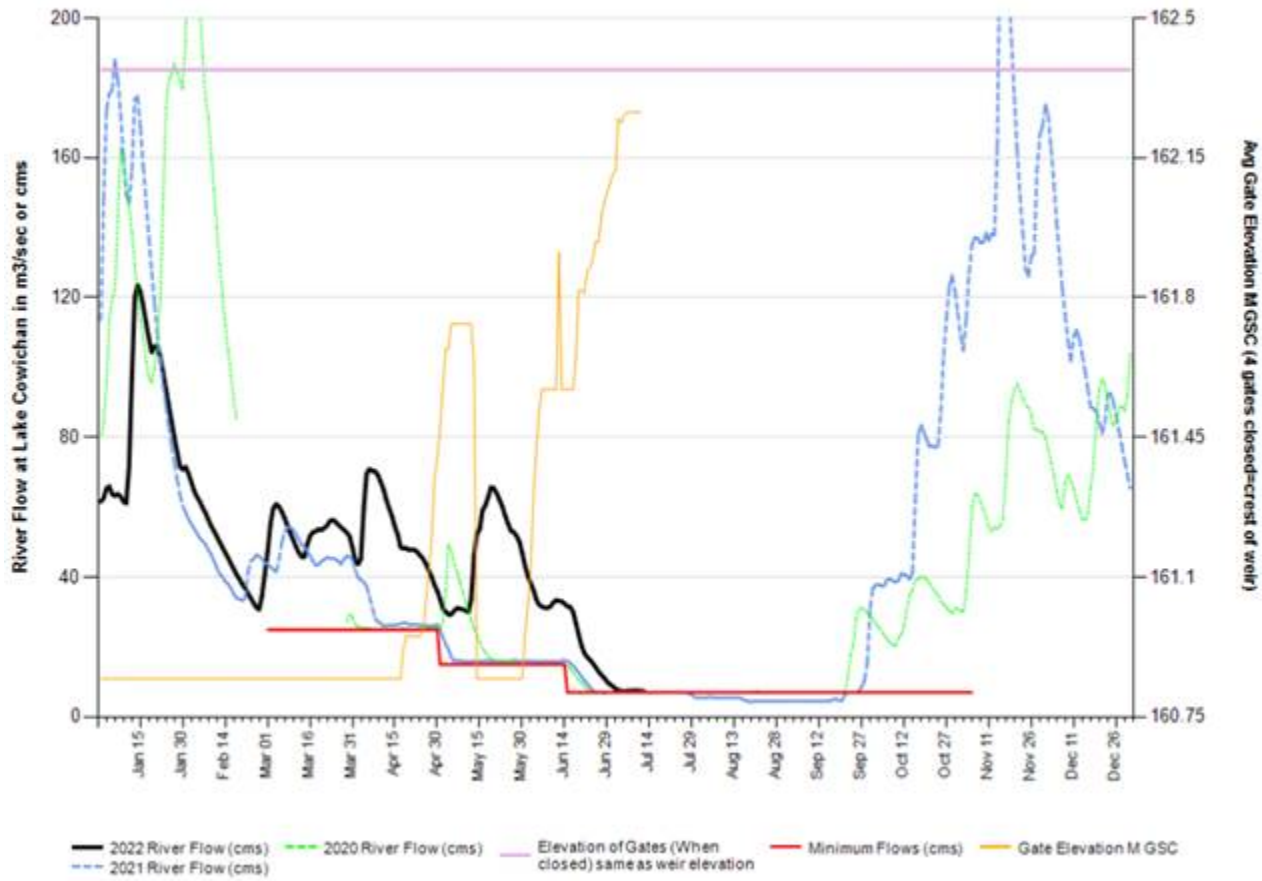
The risk of needing to reduce river flow to below summer base flow of 7 cms this year is low.

Regards,
Brian Houle
Manager, Environment
Catalyst Crofton
250-246-6236

2022 Cowichan Lake Level - 2022 (Black) & 2021 (Blue) & 2020 (Green)



2022 Cowichan River Flow - 2022 (Black) & 2021 (Blue) & 2020 (Green)

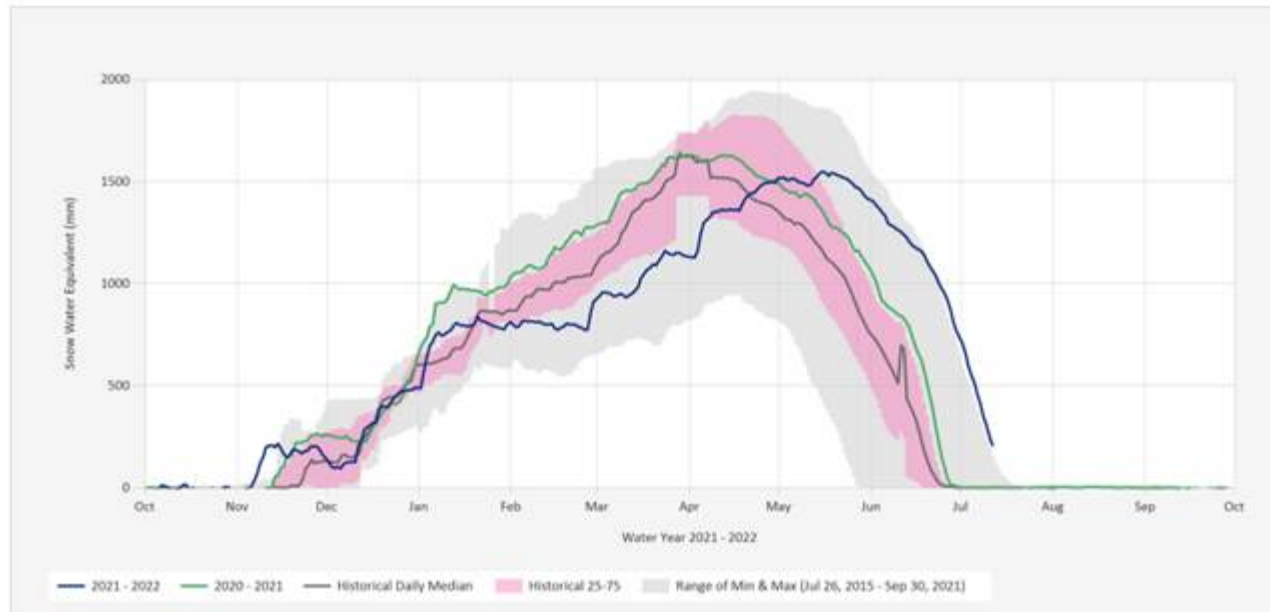


Next 7 Days

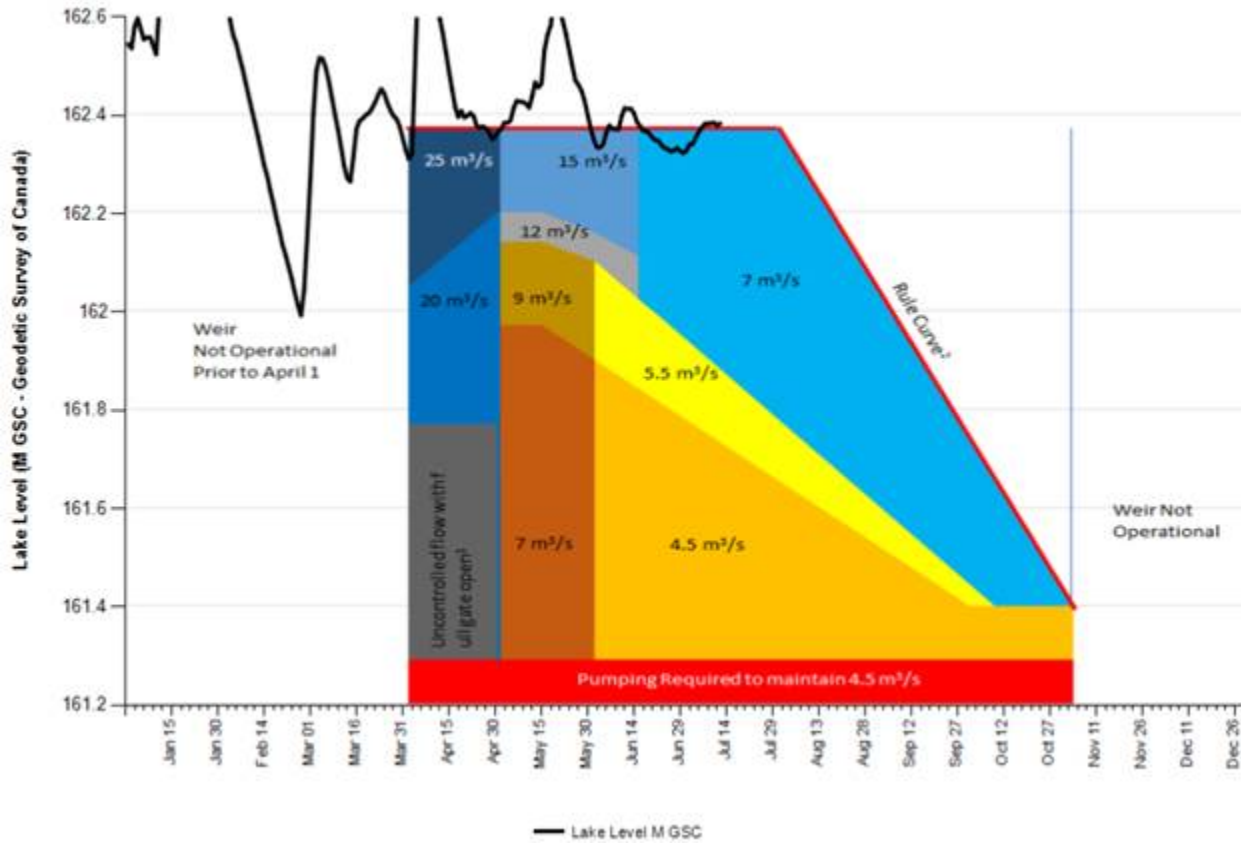


	Wed 07/13	Thu 07/14	Fri 07/15	Sat 07/16	Sun 07/17	Mon 07/18	Tue 07/19
	Mainly sunny	Mainly sunny	A mix of sun and clouds	A mix of sun and clouds	Mainly sunny	Mainly sunny	Mainly sunny
	19°	22°	19°	20°	20°	24°	21°
Feels like	19	23	19	20	20	27	22
Night	12°	10°	13°	10°	10°	12°	12°
POP	20 %	20 %	30 %	30 %	30 %	20 %	20 %
Wind (km/h)	9 s	7 sw	8 sw	8 sw	7 w	6 s	8 w
Wind gust (km/h)	14	11	12	12	11	9	12
Hrs Of Sun	12 h	9 h	6 h	6 h	8 h	11 h	9 h

Source Data: SWDaily@3824P
Location: Heather Mountain Upper, Latitude: 48.943875, Longitude: -124.452113, Elevation: 1190 m



2022 Cowichan Lake Level and River Flow Guidance Chart - Above Average snow pack



This email and its contents are for the exclusive benefit of Paper Excellence Canada Holdings.

Legal Disclaimer: This e-mail and any attachment(s) are confidential. If you are not the intended recipient, please notify the sender immediately by return e-mail, delete this e-mail and do not copy, use or disclose it to any other person.