

Houle, Brian (Crofton)

From: Houle, Brian (Crofton)
Sent: Monday, August 22, 2022 4:22 PM
To: Houle, Brian (Crofton)
Subject: Watershed Update: August 22, 2022

Good day,

Conditions remain ideal in the watershed.

Flow from Cowichan Lake remains at just over 7 cms and minimal risk of lower flows needed this year.

Lake level is declining at a rate that is about equal to the rule curve currently.

License minimum flow is 7.08 cms and flow will be sustained at or above that flow with lake level as high as it is.

Weather forecast continues to predict dry weather for coming 7 days.

Discussion has begun with Department of Fisheries and Oceans (DFO) regarding the possibility of one or two fish pulse flows later this year.

The higher lake levels ensures we are able to conduct pulse flows designed to help the salmon enter the river system earlier.

The accumulation of many salmon in Cowichan Bay presents opportunity for predatory activity and if the salmon can enter the river system earlier, they become more protected from predatory activity.

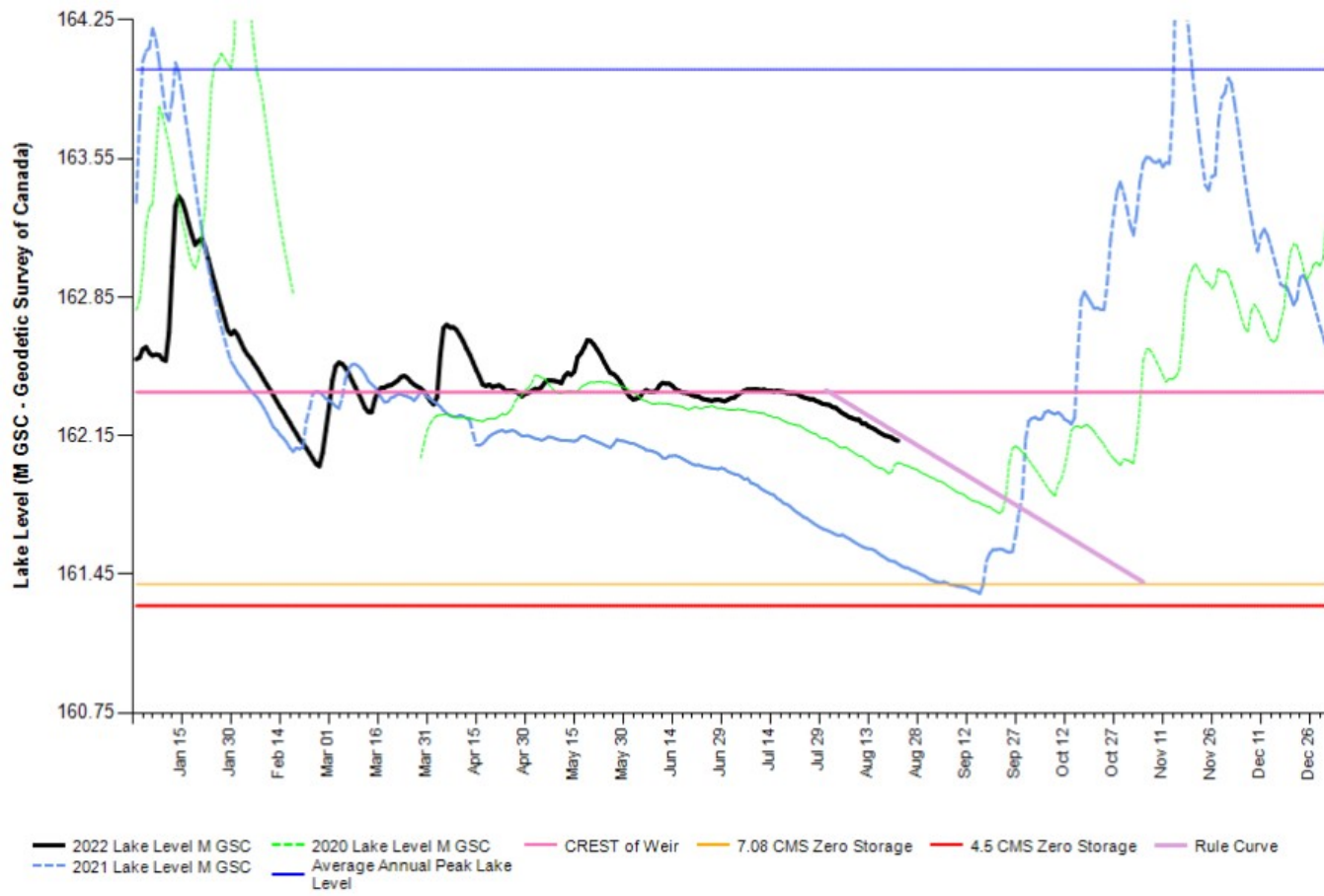
If fish pulse flows are to be scheduled, a description of what the flow adjustments will be will be provided in this weekly watershed update email and in advance of the fish pulse flow program.

It is likely that fish pulse flows would be scheduled in September or October and timed out to rainfall events and with consideration of when a full moon will occur.

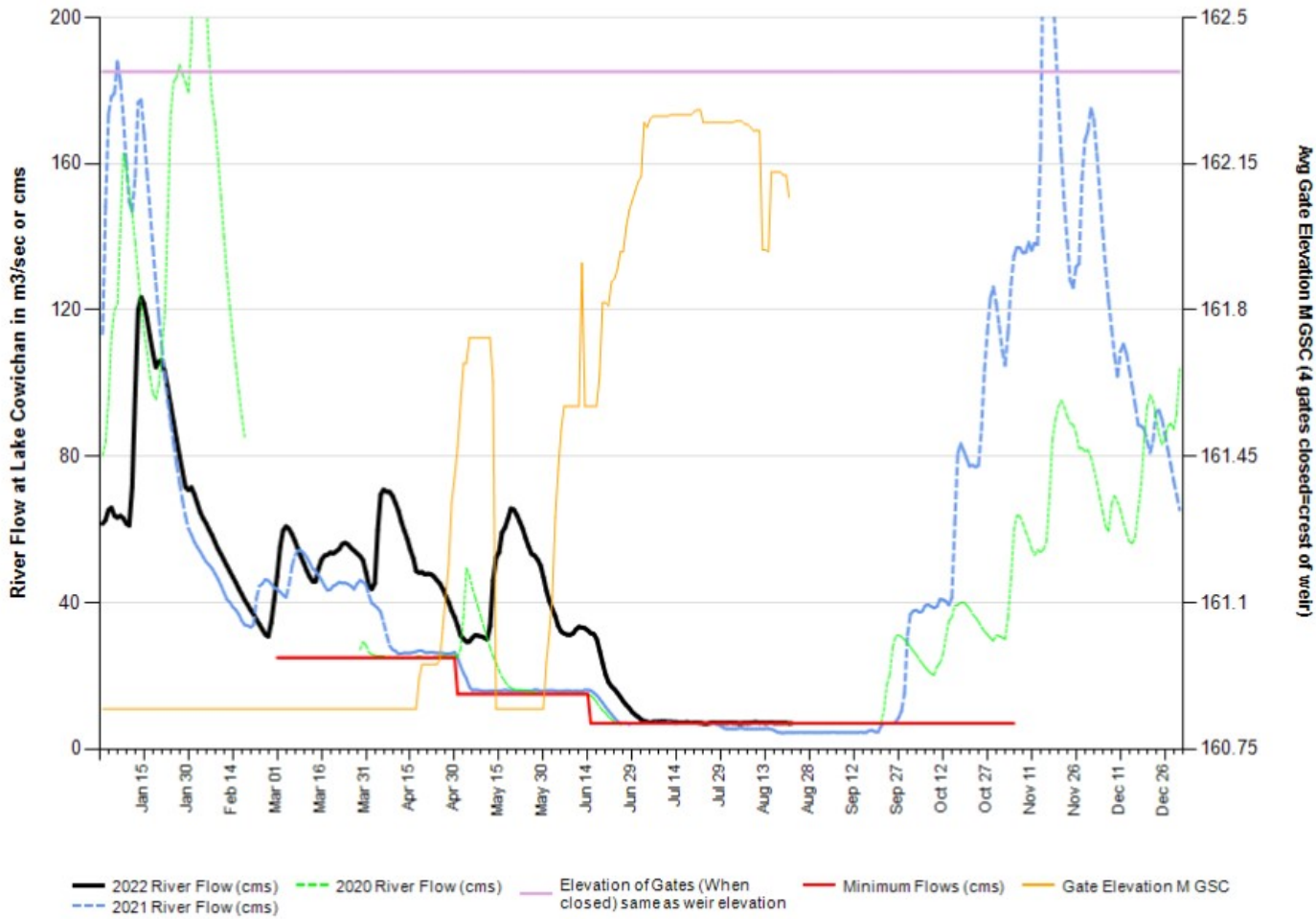
Fish pulse flows have many aspects that need to be factored in and DFO brings that expertise.

Regards,
Brian Houle
Manager, Environment
Catalyst Crofton
250-246-6236

2022 Cowichan Lake Level - 2022 (Black) & 2021 (Blue) & 2020 (Green)



2022 Cowichan River Flow - 2022 (Black) & 2021 (Blue) & 2020 (Green)



Next 7 Days



	Tue 08/23 Sunny	Wed 08/24 Sunny	Thu 08/25 Sunny	Fri 08/26 Cloudy with sunny breaks	Sat 08/27 Cloudy with sunny breaks	Sun 08/28 A mix of sun and clouds	Mon 08/29 Mainly sunny
	23°	30°	32°	24°	23°	25°	28°
Feels like	26	36	36	28	25	28	31
Night	16°	20°	15°	15°	12°	14°	15°
POP	10 %	20 %	10 %	40 %	30 %	20 %	20 %
Wind (km/h)	5 NE	6 E	10 NE	5 S	3 NE	6 E	3 SE
Wind gust (km/h)	8	9	15	8	5	9	5
Hrs Of Sun	12 h	13 h	13 h	3 h	3 h	7 h	9 h
24 Hr Rain	-	<1 mm	-	<1 mm	-	-	-

This email and its contents are for the exclusive benefit of Paper Excellence Canada Holdings.

Legal Disclaimer: This e-mail and any attachment(s) are confidential. If you are not the intended recipient, please notify the sender immediately by return e-mail, delete this e-mail and do not copy, use or disclose it to any other person.