

Houle, Brian (Crofton)

From: Houle, Brian (Crofton)
Sent: Monday, July 19, 2021 2:14 PM
To: Houle, Brian (Crofton)
Subject: Watershed Update July 19

Good day everyone,

Conditions are now confirmed in that we no longer have enough water in the lake to sustain the license minimum flow of 7.08 cms. In that condition, an application has been submitted to the province (FLNRORD / ministry of Forests, Lands, Natural Resource Operations & Rural Development) requesting authorization to reduce river flow to 5.5 cms initially and if needed, to later reduce flow to 4.5 cms to ensure a base flow in the river until return of fall rainfall and refilling of the lake. In addition, given a reduced river flow in the Cowichan River can be harmful to fish/fish habitat, an emergency authorization has also been submitted to the federal Department of Fisheries and Oceans.

Given the collaborative approach that has been employed with dry season management of the Cowichan, a special meeting is scheduled for later today to discuss these two applications and to be guided on how to progress forward with the needed flow reductions.

Regular lake and river trends included below and with lake currently 41% full, we are fast approaching the guidance for a further reduction in flow down to 4.5 cms.

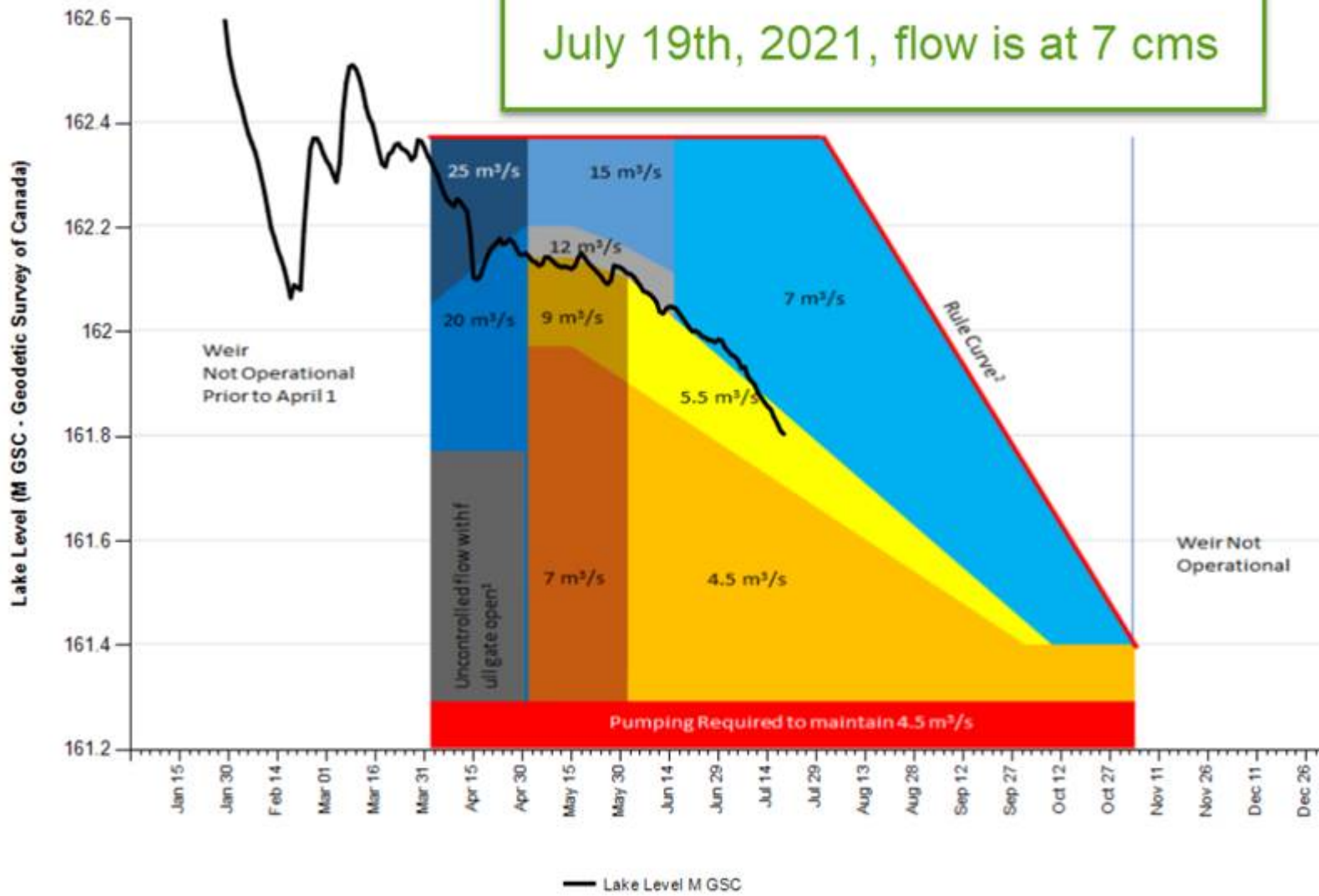
Weather forecast also included and as expected, no significant rainfall expected in this region in coming 7 days.

Regards,

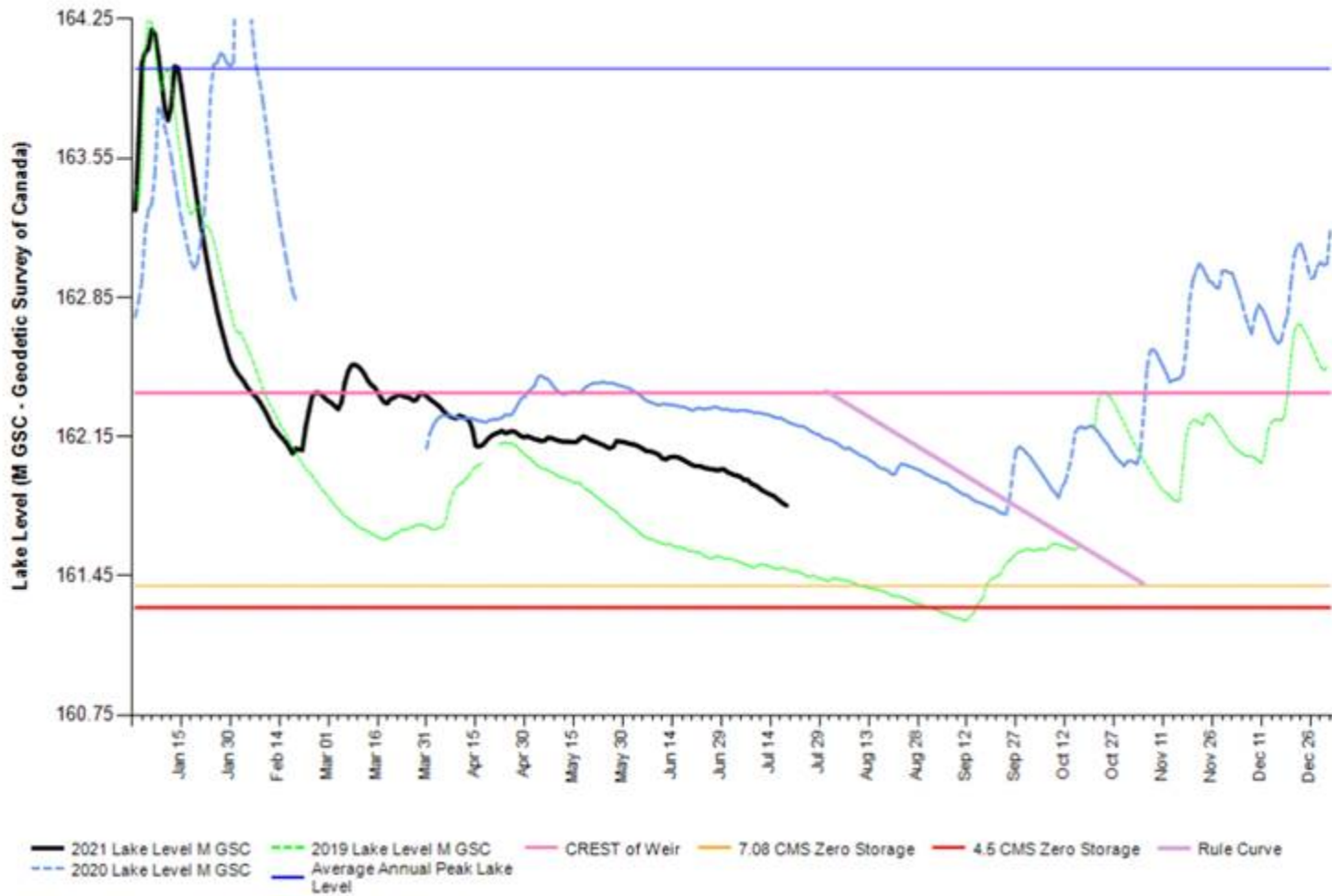
Brian Houle
Manager, Environment
Catalyst Crofton
250-246-6236

2021 Cowichan Lake Level and River Flow Guidance Chart - Above Average snow pack

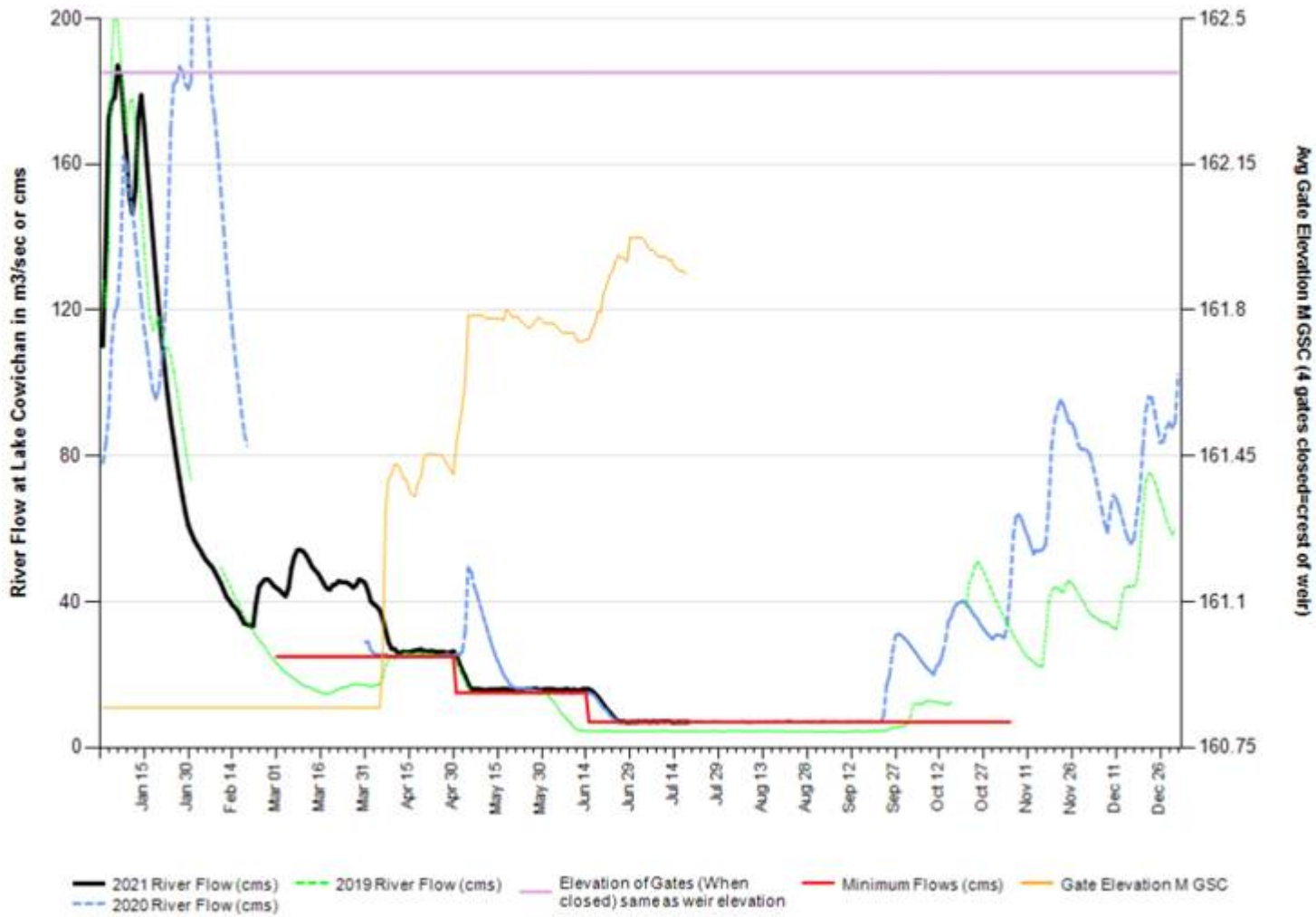
July 19th, 2021, flow is at 7 cms



2021 Cowichan Lake Level - 2021 (Black) & 2020 (Blue) & 2019 (Green)



2021 Cowichan River Flow - 2021 (Black) & 2020 (Blue) & 2019 (Green)



Next 7 Days



	Tue 07/20 Mainly sunny	Wed 07/21 Mainly sunny	Thu 07/22 Sunny	Fri 07/23 Mainly sunny	Sat 07/24 Sunny	Sun 07/25 Mainly sunny	Mon 07/26 Mainly sunny
	20°	20°	23°	25°	26°	24°	23°
Feels like	20	20	23	25	29	26	23
Night	11°	10°	11°	13°	13°	12°	11°
POP	20 %	20 %	10 %	10 %	10 %	10 %	10 %
Wind (km/h)	13 w	11 w	4 SE	10 w	8 SW	12 SW	6 SW
Wind gust (km/h)	20	17	6	15	12	18	9
Hrs Of Sun	11 h	12 h	13 h	13 h	14 h	12 h	12 h

This email and its contents are for the exclusive benefit of Paper Excellence Canada Holdings.

Legal Disclaimer: This e-mail and any attachment(s) are confidential. If you are not the intended recipient, please notify the sender immediately by return e-mail, delete this e-mail and do not copy, use or disclose it to any other person.